

RHIGOS PRIMARY SCHOOL

NEWSLETTER

Friday, 20 May 2022



"Together we plant the seeds for tomorrow's future"

Head teacher Mrs J Mundy

E mail : admin@rhigosprimary.rctcbc.cymru

Website address : rhigosprimary.co.uk

Tel no. 01685811253

Seren yr Wythnos

Nursery - **Brayden** for being a caring and helpful member of Meithrin.

Class 1- **Jacob** for making an extra effort to remember his reading folder all week.

Class 2- **Isabel** for 10/10 in her spellings this week and for beautiful handwriting.

Class 3- **Grace** for always trying hard and giving her best.

Head teacher's Award -

**Rhiannon** - for achieving 100% in her Accelerated reader online quiz.



Seesaw Homework Awards

This weeks awards for engagement in on line learning goes to

Class 1 **Jake W**

Class 2 **Evie**

Class 3 **Maisie**

Well done!!



Criw Cymraeg have decided on

Ymadrodd yr Wythnos

Phrase of the week



Ga i -----os gwelwch yn dda?

Can I have-----please?



This week's school attendance is

85.8%

**May 27th - Queen's Platinum Jubilee party**  
end of term

**May 30th to June 3rd -half term break**

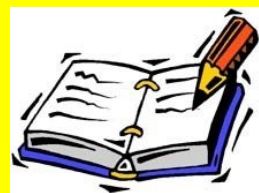
**June 8th - parents meeting re Margam residential**

**June 21st - Inset - school closed to pupils**

**July 6th to 8th - class 3 residential trip to Margam**

**July 12th - School trip to Folly Farm**

**July 22nd - Inset - school closed to pupils**



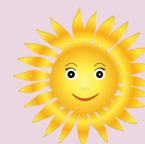
### QUEEN'S PLATINUM JUBILEE

#### **Party in the Yard**



We will be having a Jubilee Party for the Queen's Platinum Jubilee on Friday, May 27<sup>th</sup> in our playground. Children and staff can come dressed in **red, white or blue** - or a combination or other Jubilee/royalty themed clothing.

We need every one to keep their fingers crossed for fine weather on that day.



#### **Jubilee Competition**

Thank you for your jubilee crowns. Photographs of the crowns and portraits of the Queen that have been completed in class have been sent off to RCT and we await to hear the results.



### After school clubs

Wednesday after school from 3.30pm – 4.15pm.

Please see table of choice below:

Focus	Member of Staff	Ages
Media	Mrs Murphy	Year 2 - Year 6
Creative	Miss Harris	Year 2 - Year 6
Sport	Mr Mathieson	Year 3 – Year 6

## PE days

CLASS	DAY	WHAT TO WEAR
Nursery	FRIDAY	White top and black shorts/leggings/jogging trousers
Class 1	FRIDAY	
Class 2	THURSDAY	
Class 3	WEDNESDAY	

If you have any queries please contact the school or see your class teacher. Diolch

### Outdoor Learning

We have had an amazing outdoor tower and slide together with a Fireman's pole constructed in our Foundation Phase for our pupils. It will help our children learn social skills and build their confidence as they play and learn. We are now waiting for fine weather so that an all-weather rubberised surface can be laid.

This is also on our school twitter page.



### PSE

We have a new school police officer ~ PC Arndell who came to visit our Years 5 and 6. She will be coming into school to provide sessions with our children to raise awareness of substance misuse, safeguarding, social behaviour and community issues. All information is accurate and up to date, age and ability appropriate and interactive.



Last Friday we had a visit from the **Welsh Brass Trio**.

The children had an opportunity to try different instruments and they all had a fabulous time .

It was good to welcome visitors "face to face" into our school.



What do you call a cute door?

A-door-able!!

What do you call an American bee?

A USBee!!

Logan



### Folly Farm

We would like to take the children to Folly Farm on Tuesday, July 12<sup>th</sup> 2022.

Your child would have come home with a permission slip. The cost will be £15.00. We will leave school at 9am and leave Folly Farm at approximately 2.30pm. We kindly ask that you confirm a place for your child and a £5 deposit by Friday 27th May.

If you have any queries please contact the school.



### Residential ~ Margam Discovery Park for Class 3

Wednesday, July 6<sup>th</sup> to Friday, July 8<sup>th</sup> 2022.

We would like to invite the parents and carers to a meeting after school at 3.30 on

**Wednesday, June 8<sup>th</sup> 2022** in Mr Mathieson's class.

Please can the next £50 be paid by Friday 27th May.

### GOOD BYE and POB LWC



We said our good byes to Miss Williams in Class 1 and Mr Morgan in Class 3. Miss Williams and Mr Morgan have been completing their PGCE (Post Graduate Certificate in Education) with us. This is the training to become teachers. Once qualified they are able to take up teaching posts in primary schools. Both Miss Williams and Mr Morgan have been an absolute pleasure to have at Rhigos Primary. We are very sad to see them go but wish them the very best as they start out on their teaching journey.

### Best Breakfast Club in Wales Kellogg's Award

We have had a lovely letter from Vikki Howells, Member of the Sennedd for Cynon Valley congratulating us on being 'crowned the best Breakfast Club in Wales'!!

Mrs Howell's has asked if she could come and visit our 'fantastic breakfast club' and we have replied saying that we would be delighted!!

We have set a date for Friday, June 10<sup>th</sup> 2022.



### Rhigos Primary Playgroup

Playgroup is held every Wednesday morning 9.15 to 10.30

This week the children enjoyed hand painting, singing time and general play.

Next week is messy play.



### Holidays in term time

Can I remind everyone that holidays will only be authorised if your child's attendance for the 12 months prior to the holiday application is over 95% and stays above 95% to the date of travel.



### Absence messages

When your child is absent from school a message should be left on the school phone informing us of the illness.



Unfortunately saying "unwell" is not acceptable by the Attendance and Wellbeing Service, so we ask for your support in that a more detailed explanation is given.

If your child has any appointments please provide us with the official letter for our records.

### Road Safety

In the interest of safety for all our children please do not park on the yellow lines in front of the school and from parking on the pavement opposite the entrance of the school. With poor visibility during bad weather crossing the road becomes very hazardous when the traffic is increased at the start and the end of the school day.

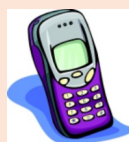


As we continually update our records please could you inform us of any **NEW** allergies that your child may have.



### Pupil contact details

Please can you notify the school of any change of address or contact details as soon as any changes are made for your child.



Please could children bring their reading books every day to school.

